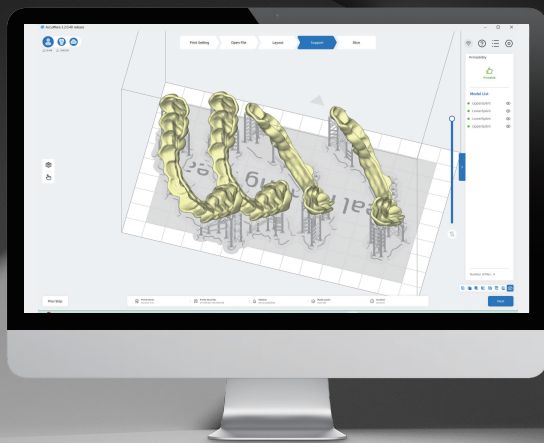


# AccuFab-D1s Dental 3D Printer

More Efficient, More Accurate



# AccuFab-D1s

## Your Upgraded Printer

Based on years of experience in the dental industry, the upgraded AccuFab-D1s offers users a more intuitive and user-friendly workflow with even faster print speed and better accuracy. With diverse resin material options, it can meet diverse demands in restorative implant and orthodontic applications. This is the ideal printer solution for all dental customers wishing to enter into the era of digital production.

### Fast Print Speed

Featuring a large build volume of 144 x 81 x 160 mm and a fast print speed of up to 90mm/h, the AccuFab-D1s is able to print max 4 arch models in 16 minutes.

### Ultra High Accuracy and Details

Patented pixel-to-pixel distortion correction algorithm and full HD 1080p projector guarantee ultra-fine print accuracy and details.

### Intelligent Print

Integrated with advanced print software, the AccuFab-D1s supports intelligent support creation and "Magic Click" provides a user-friendly print experience with highly consistent accuracy.

### Long Lifetime and Low Cost

With the long lifetime resin tank, the AccuFab-D1s provides customers with multi-printing choices on different types of resin tanks. The fast resin tank can be used for 120,000 layers of printing and the normal resin tank can be used for 100,000 layers of printing.



( Optional )



( Optional )



# Multiple Material Options

## Shining Dent

Shining Dent covers a wide range of materials for dental 3D printing applications.

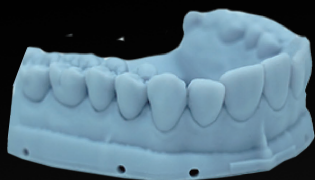
## Certified 3<sup>rd</sup> Party Material

SHINING 3D partners with industry-leading brands in dental material, providing more possibility and flexibility.



# All-round Dental Printer

AccuFab-D1s can be applied in a wide range of applications, such as dental working models, wax-up, surgical guides, gingiva, customized impression trays, indirect bonding trays.



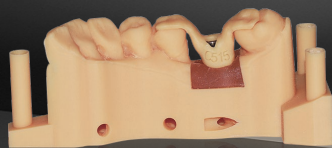
Implant Model (Grey)



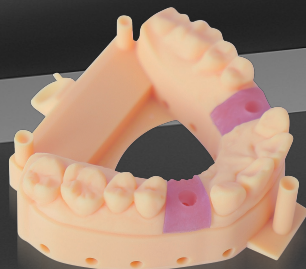
Try-in Denture Resin



Surgical Guide



Positioning Jig



Gingiva Mask





Implant Try-on



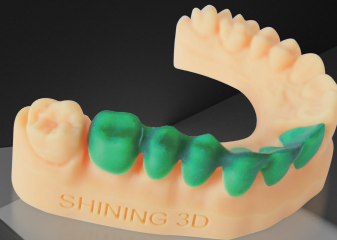
Ortho Model



Dental Model



Indirect Bonding Tray



Wax-up

Customized  
Impression Tray



Temp

# Ceramic Platform

## Enhancing Biocompatibility

Our biocompatible material has been meticulously engineered to provide robust support for Class II and higher-grade resins.

## Precision in Small-scale Printing

Ideal for crown, bridge, and full arch printing. Our system excels in small-scale, high-value printing for chairside applications within clinical settings.

## Residue-free Printing

The smooth surface of our ceramic platform prevents excess residue from adhering, ensuring a hassle-free and efficient cleaning process.

## Superior Durability

Our high-hardness platform offers both model printing stability and greater resistance to damage during cutting operations, guaranteeing a long-lasting performance.



# Fast Resin Tank

## Super Fast Printing and Enhanced Accuracy

### Introducing New Film Technology

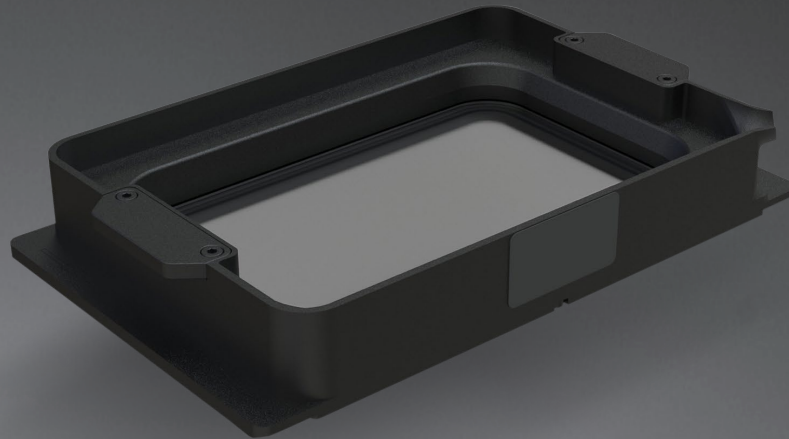
Our innovative film technology, combining with a ceramic platform, ensures unparalleled printing accuracy and unwavering stability, eliminating residues and outliers.

### Exceptional Longevity

The fast resin tank boasts an impressive lifetime of up to 120,000 layers, allowing for extended printing sessions with numerous successful and fast prints.

### Extremely Fast Printing

With a minimum starting volume of 100ml and a maximum of 350ml, our system is perfectly tailored for producing high-accuracy and fast resin prints. AccuFab-D1s can print 4 arch models in 16 minutes, crown and bridge in 30 minutes.



# TECHNICAL SPECIFICATIONS

## AccuFab-D1s

Dimension(W/D/H)	394 x 406 x 755 mm
Weight	30 kg
Build envelope (X/Y/Z)	144 x 81 x 160 mm
Print speed	Max 90 mm/h*
Print accuracy	± 35µm**
Layer thickness	50/75/100 µm
DLP native resolution	1920 x 1080,1080 p
Material option	Open
Interface	USB / Ethernet /Wi-Fi

\* The print speed varies and is directly related to the different types of materials or layer thickness.

\*\* Measured by a certain method under certain environment.

Notice: SHINING 3D reserves the right to introduce modifications or alterations to any of the specifications and images used in this document.